

Informações

HomePage: <http://www.xten.com> [<http://www.xten.com>]

Versão: X-Lite_Win32_3.0.exe

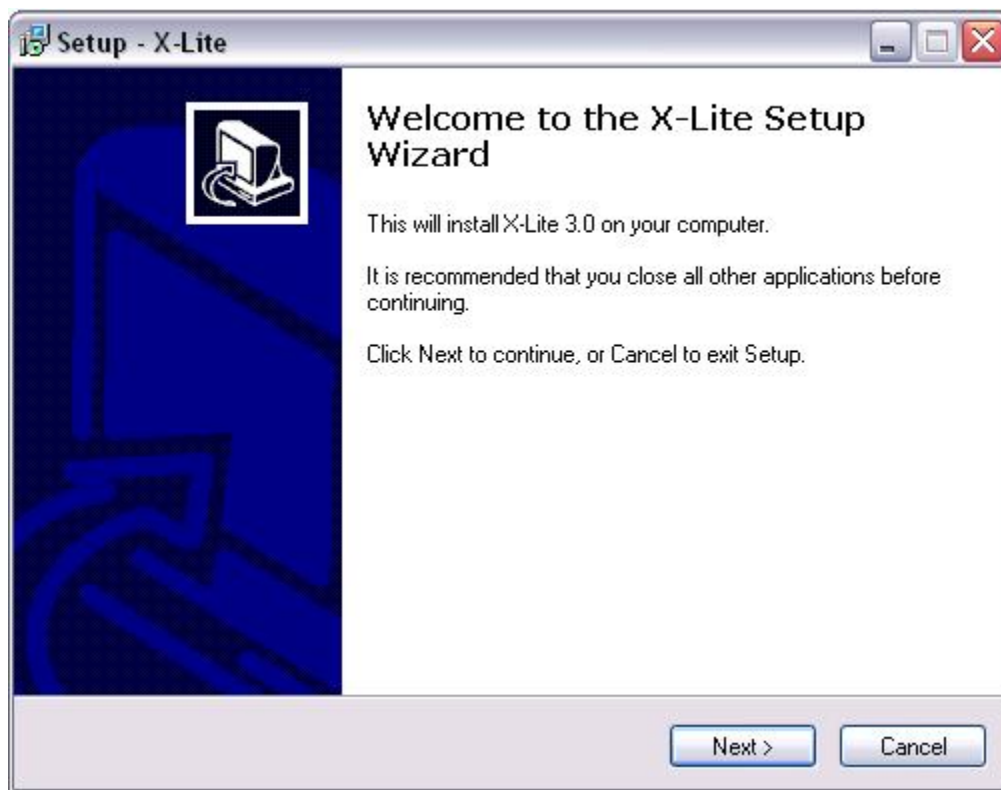
Obs.: Utilizar em Windows2000/XP. Não funciona em Windows98.

Instalação

Executar o arquivo de instalação X-Lite_Win32_3.0.exe

E na seguintes telas:

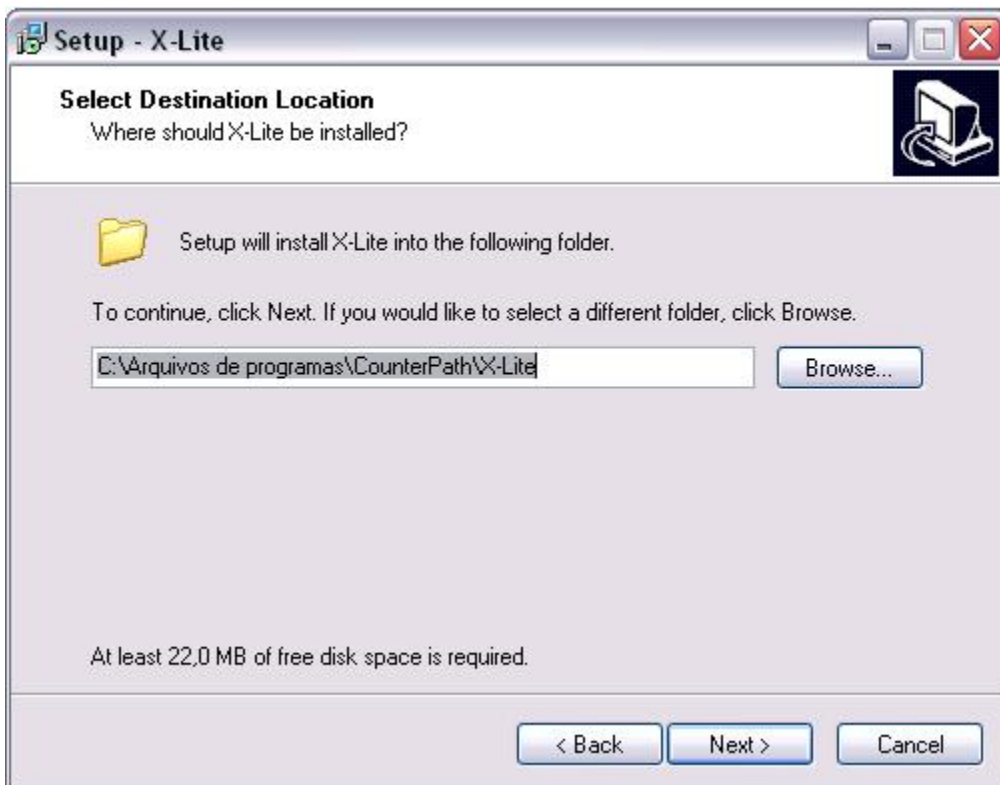
Clique em NEXT→



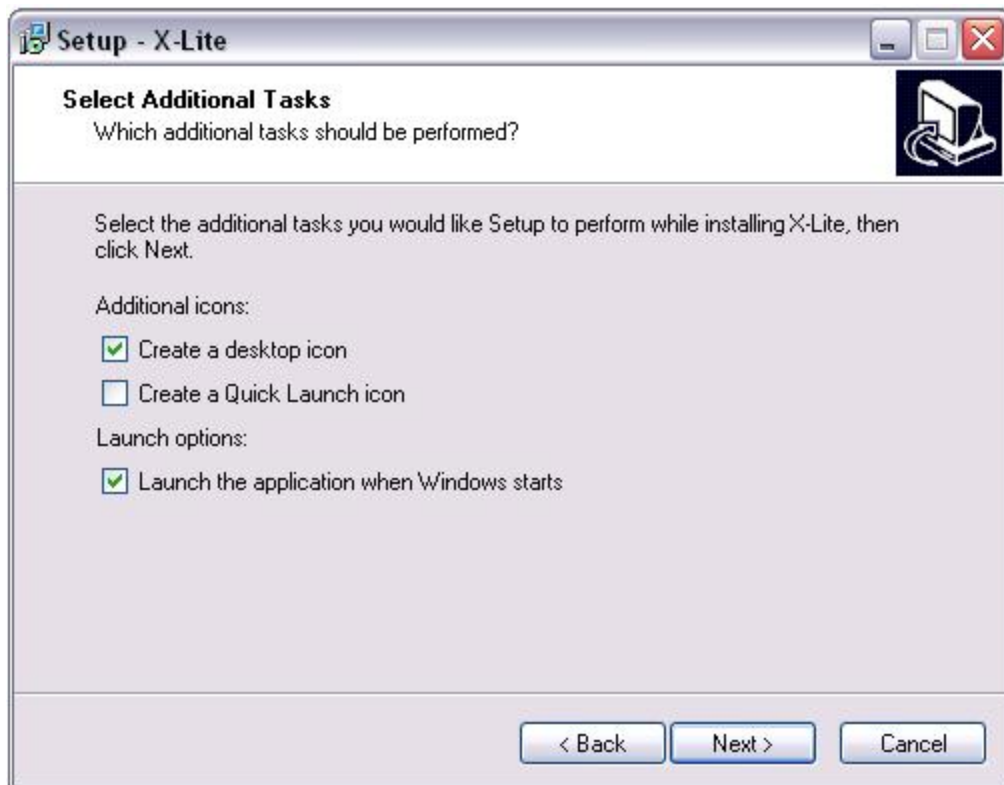
Selecionar a opção "I accept the agreement" e clique em NEXT→



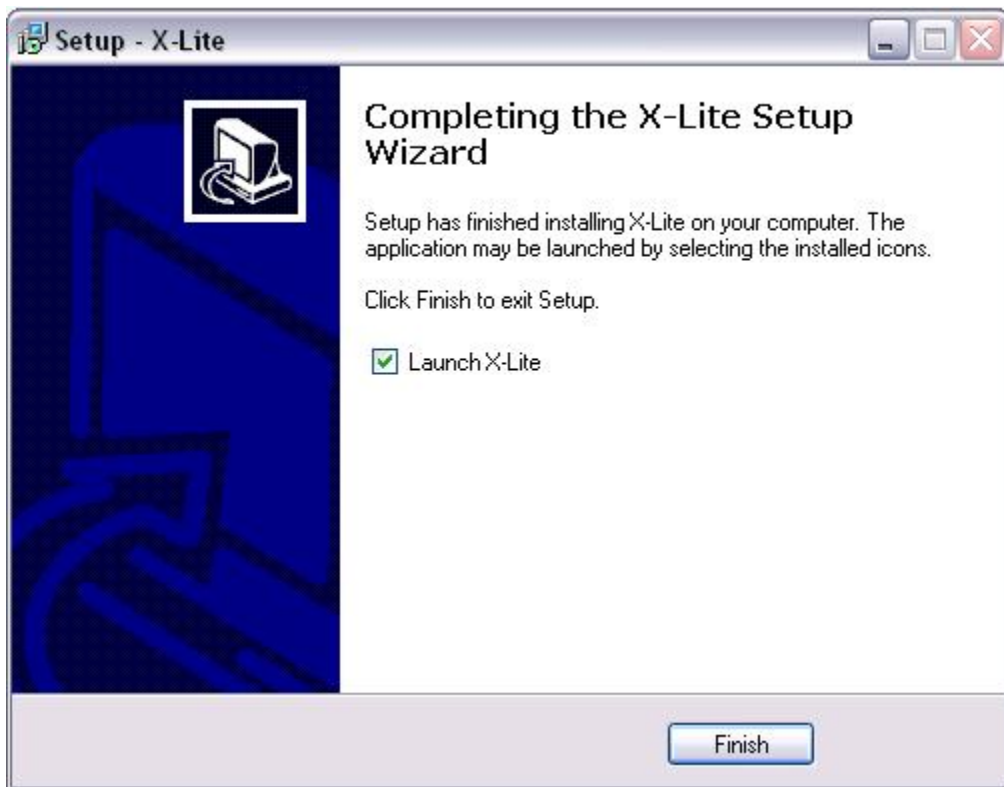
Clique em NEXT→



Clique em NEXT→

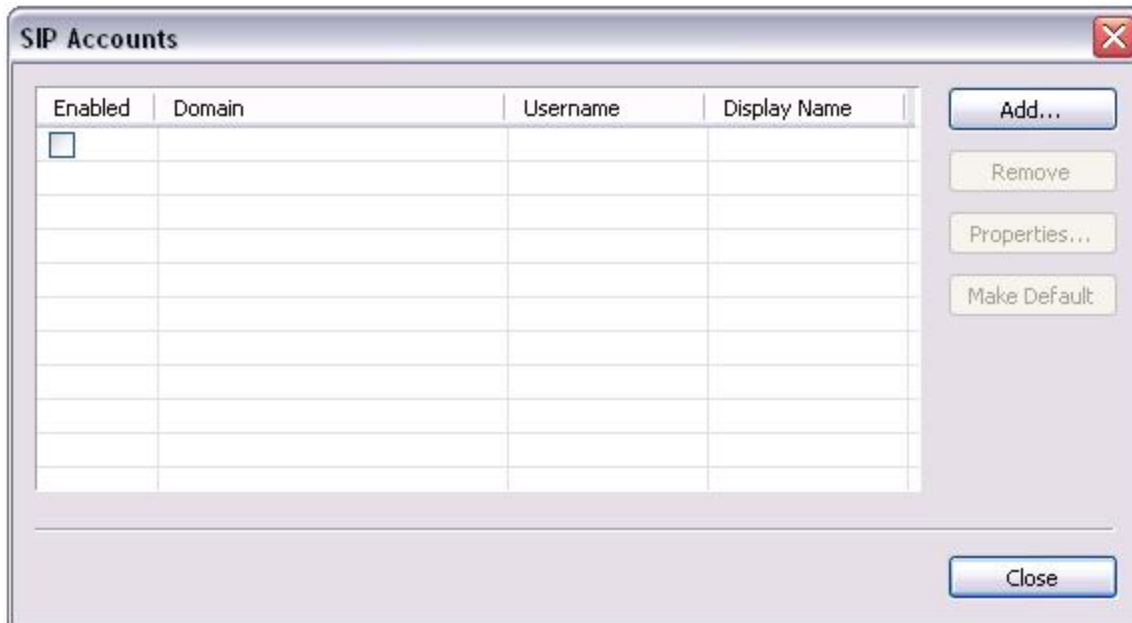


Clique em FINISH→



Configuração

Após o termino da instalação, a janela para configurar o ramal abrirá automaticamente, clicar em "ADD", conforme imagem a seguir:



Na aba "Account", preencher os campos da seguinte forma:

Display Name: SEU_NOME

User name: RAMAL

Password: SENHA

Authorization user name: RAMAL

Domain: IP_DO_SERVIDOR_VOIP

Clique em "Aplicar" e depois em "OK".

Properties of Account1 [X]

Account | Voicemail | Topology | Presence | Advanced

User Details

Display Name	Felipe
User name	2031
Password	••••••
Authorization user name	2031
Domain	192.168.200.10

Domain Proxy

Register with domain and receive incoming calls

Send outbound via:

domain

proxy Address

target domain

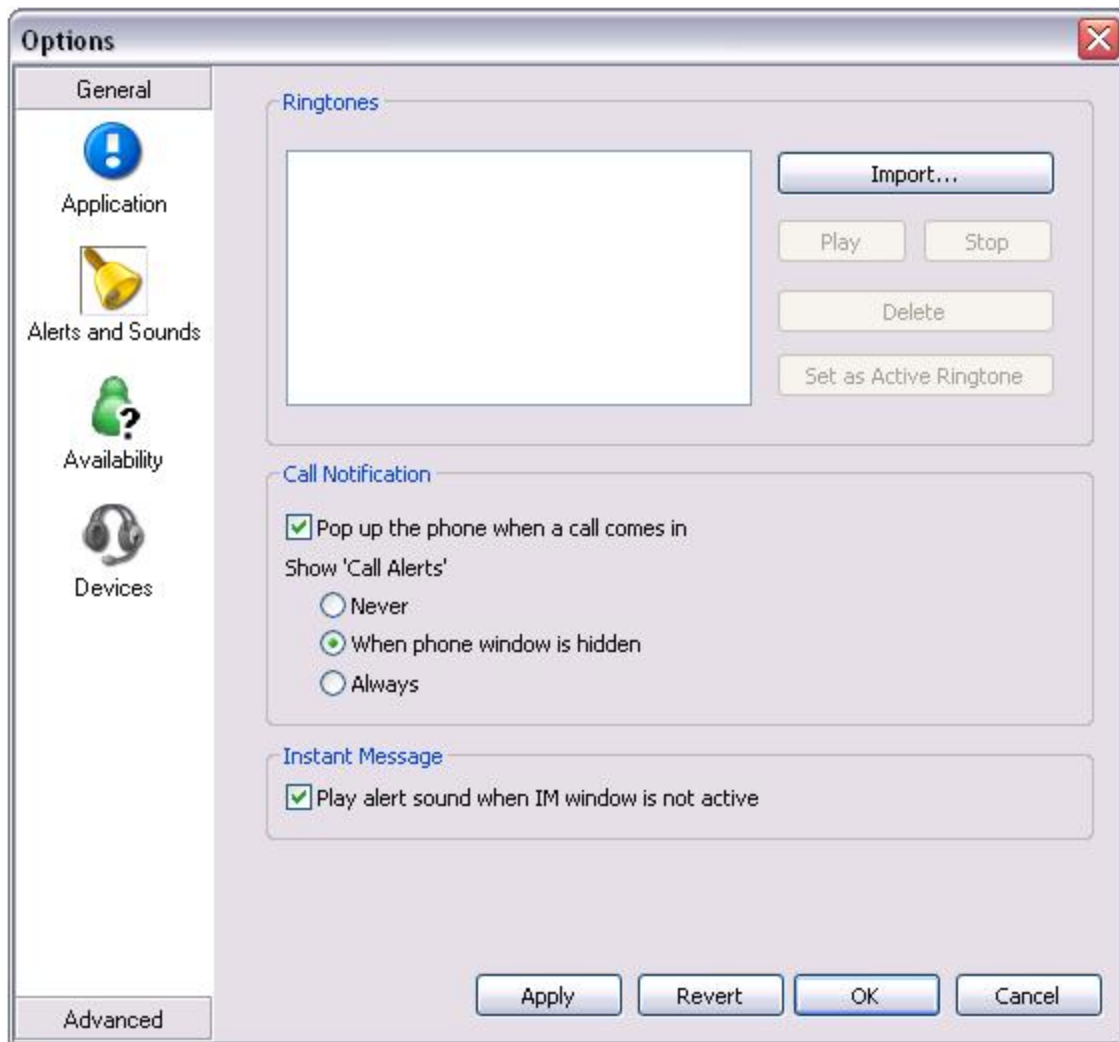
Dialing plan

OK Cancelar Aplicar

Clicar no primeiro botão no topo do X-Lite e depois no menu "Options".



Selecionar a categoria "Alerts and Sounds" e ativar a opção:
"Pop up the phone when a call comes in"



Selecionar a categoria "Devices" e na sessão "Headset":

Selecionar a placa de som da máquina em "Speaker device" e "Microphone devices"

ATIVAR

"Use acoustic echo cancellation (AEC)"

"Use auto gain control (AGC)"

DESATIVAR

"Use noise reduction"


Na sessão "Speakerphone":


Selecionar a opção "NONE" em "Speaker device" e "Microphone devices".


Clicar em "Apply" e depois em "OK".


Options ✖

General

Application 

Alerts and Sounds 

Availability 

Devices 

Advanced

Headset

Speaker device: USB Audio Device

Microphone device: USB Audio Device

Use acoustic echo cancellation (AEC)

Use auto gain control (AGC)

Use noise reduction

Speakerphone

Speaker device: None

Microphone device: None


Use acoustic echo cancellation (AEC)

Use auto gain control (AGC)

Use noise reduction

Ring Device

Speaker device: SigmaTel Audio

Speaker volume: 

Camera

Camera: None

Apply Revert OK Cancel